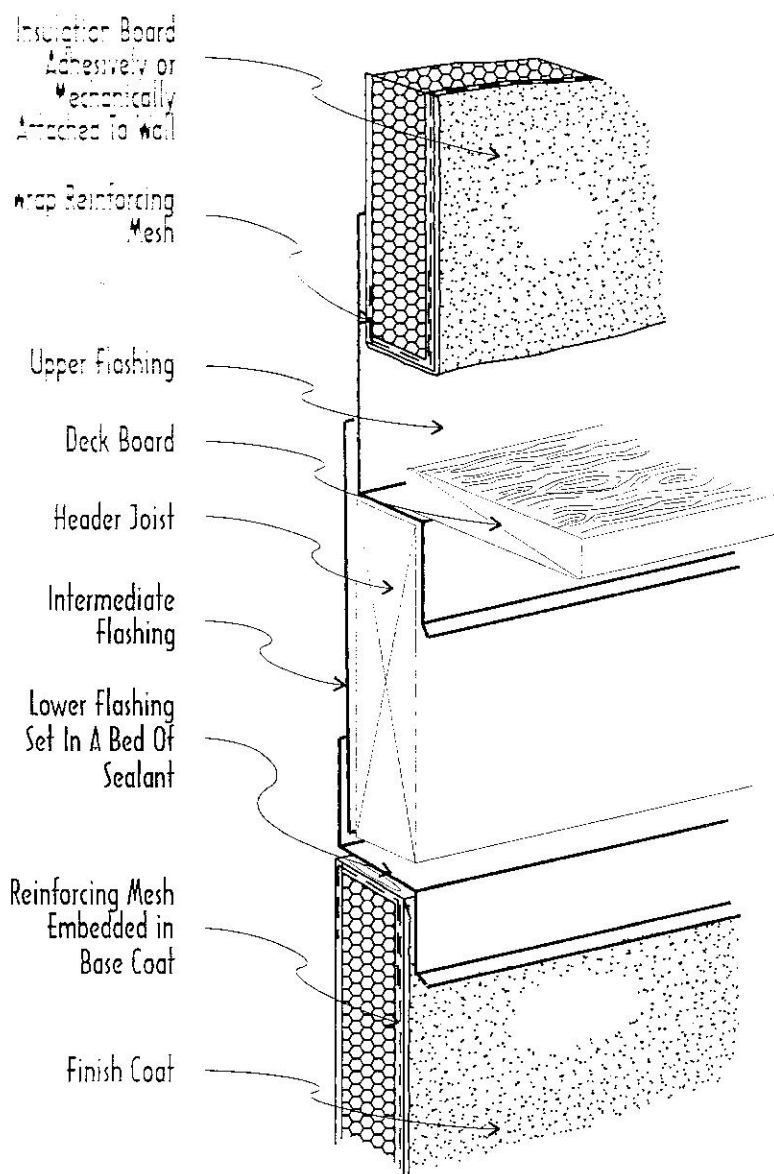


EIFS TERMINATION AT PROPERLY FLASHED DECK

DECK SECTION

The EIF System is held off of deck surface to allow for installation and maintenance of sealant, facilitate removal of foreign matter which may cause water retention, and to decrease exposure of wall system to precipitation, particularly snow and ice.



These drawings and comments are for general information only, and EIMA specifically disclaims any design or construction of these drawings. THERE ARE NO WARRANTIES, EXPRESS OR IMPLIED, ISSUED OR MADE BY EIMA CONNECTION WITH THESE DRAWINGS AND COMMENTS OR REGARDING THE USE OF EIFS. These drawings are intended and should not be used as a substitute for the EIFS system manufacturer's specifications and recommendations, construction practices and/or professional building design services.

The specification, design and construction of all EIFS must comply with local building codes and standards, applicable codes and records and the individual manufacturer's system requirements. These requirements differ materially. Only the EIFS manufacturer or design professional can furnish specifications, details, drawings, and construction practices to be followed in actual construction and use of an EIFS product and for compliance with applicable local building codes and construction practices.



EIFS Industry Members Association
3000 Corporate Center Drive
Morrow, GA 30260
(800) 294-3462